

# "APEX In Action"



SEPTEMBER 2011

## THE SHACK 20 YEARS ON...

On 12 July 2011 The Shoalhaven Heads Apex Cottages for Kids, *The Shack*, celebrated 20 years of providing family holidays for countless families who have the misfortune of having a child suffering from a chronic illness or disability.

The past 20 years have seen many improvements to the complex, including a covered barbecue area, playgrounds, storerooms, bin storage area and cubby house. The families that benefit from a holiday at *The Shack* enjoy a facility located a short walk from the beach, golf course, shops, swimming pool, river, tennis courts and sporting fields.

The community of Shoalhaven Heads is proud to have *The Shack* and various local clubs and organisations support it with financial assistance and donations of items such as blankets and toys, which help to make the units more comfortable.

The excellent design of *The Shack* provides four units with direct access to a child safe play area and two freestanding units with greater privacy. There is a covered carport adjacent to a barbecue area that many groups use as a communal dining area and has been the venue of many parties. Families coming to the units often find that they have something in common with all other families, gaining an appreciation of the hardships of others and a sense of belonging. The units provide a nurturing and supportive environment which is good therapy for the parents, the sick child and their siblings.

Continued on page 2...

### **Annual General Meeting Date Claimer:**

The Apex Foundation 2011 Annual General Meeting will be held at the Seminar Room, Level 8, Macquarie Bank, No 1 Martin Place, Sydney NSW 2000 on Friday 18th November 2011 6:30pm for 7:00 pm start.

### **Also in this issue:**

Page 2	The Shack 20 years on..
Page 3	Civilian Widows Trusts
Page 4	Vale Mister Shaun
Page 5	Cranio-Facial Trust
Page 6	Melanoma Trust

## THE SHACK 20 YEARS ON... (Cont)

Over the past 20 years *The Shack* has been maintained in excellent condition. Many Apex clubs have attended working bees to carry out general maintenance, painting and cleaning. A major infestation of termites in the units four years ago required extensive remedial work and ongoing monitoring to ensure that no future infestation occurs. *The Shack* committee has always been appreciative of Apex Club assistance, especially from the Berry Apex Club, who have lent valuable support over many years.

We cannot thank Kristine Vincent enough for the work she does to keep the Shack going.

Kristine does all of the bookings, organises maintenance, cleaning, lawns and gardens, collects the rent and reports back to the Apex Foundation. She spends long hours on the phone talking to our many clients and is an invaluable counselor for the many distraught parents who are dealing with the trauma of having a sick child. If the family coming to *The Shack* does not have a car, Kristine will provide some groceries in the cupboards and the fridge. Further she picks the family up from the Berry train station and drives them out to Shoalhaven Heads.

Should any Apex clubs wish to help by carrying out some maintenance to *The Shack* or if you would like to sponsor a family for a holiday please phone Ray or Kristine Vincent on (02) 4448 7231 or contact the Apex Foundation.



# CIVILIAN WIDOWS TRUSTS



## NEW SOUTH WALES



For many years now, the NSW Civilian Widows Trust has been assisting worthy grant applications in support of disadvantaged youth. Its most recent recipients were athletes who participated in the Special Olympic Games, in Athens Greece. The Trust was able to support five team members in raising the necessary funds to attend the Special Olympics.



*"Special Olympics athlete, Greg Black from WA, celebrates his Silver medal in the 800m freestyle event, along with his sister Courtney".*

## QUEENSLAND

Only in its first year of operation, the Queensland Civilian Widows Trust is already making a difference for disadvantaged QLD youth. Following the devastation of the Floods and Cyclone Yasi, hundreds of primary school students have been supported through the purchasing of uniforms, as well as support with school fees and books. The Trust has also enabled students to attend a youth development camp, as well as meeting the transportation costs for Tully High School students, to attend the Challenge Games.



*"Members of the ACW QLD in attendance of the Trust signing in Brisbane"*



## CIVILIAN WIDOWS TRUSTS (CONT)

### WESTERN AUSTRALIA



"WA State President, Jan Roberts presents a cheque to Director Graham Henry at a ceremony in Perth to launch the WA Trust".

The WA Civilian Widows Trust is the latest Trust set up between the Apex Foundation and the State based Civilian Widows. The trust is aimed at assisting disadvantaged sole parents and their children in Western Australia. Moya Streek is on the WA advisory committee and was able to represent Apex and ACW at the farewell ceremony for the Special Olympics team in Perth, earlier this year. Her update on the event was as follows:

*"I have just arrived home after attending the farewell ceremony for the Special Olympics. I must admit that I did not feel like going on my own, but it was just a lovely ceremony. The athletes were so special, they stood there so proud to be going to Athens, it was spine tingling and I had tears in my eyes. I am just so glad I was able to be there".*

Grant applications are now being sought for WA, with details regarding criteria and guidelines available via the Apex Foundation office, or via the Website. All of the Civilian Widows Trust provide an ideal avenue to continue the great work of ACW over many decades and enable support for women in need and disadvantaged youth.

## VALE MISTER SHAUN



"Chantelle (Wife), Zac (Son) & Mister Shaun"

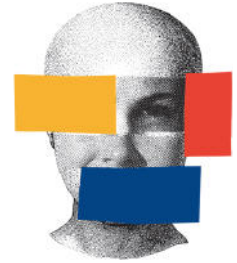
Popular Apexian, Alice Springs identity and social activist Mister Shaun, formally known as Shaun Rothwell, was tragically killed in April 2011 in a motor vehicle incident. State President designate for South Australia and Northern Territory, Mister was well known across the Apex network for his commitment to social justice, practical philanthropy and community service focus. The 1999 Young Centralian of the Year, Mister Shaun was an effective local government worker, former host of children's programs on indigenous Imparja Television and a powerful advocate for volunteering. More than 400 people attended his funeral - with many Apexians travelling from Adelaide, regional South Australia and afar. A tireless supporter of the Alice Springs community, Mister played a key part in organising the Masters Games in his community and received praise from across the social and political spectrum.

## CRANIO-FACIAL TRUST

*For over 25 years, the Apex Foundation has supported the Australian Cranio Maxillo Facial Foundation.*

*The world class Adelaide based Cranio-Facial Unit, led by Professor David David AC, has been in the news recently for the life changing impact it has on those requiring this high level surgical reconstruction.*

*The Apex Foundation, is very proud of our record of financial and community engagement that has resulted in so many good news stories.*



## LEO'S STORY...

**Leo Pucic has endured years of pointing and staring but hopes surgery will make his life "easier".**

Born in Croatia with Goldenhar syndrome - a congenital birth defect causing facial deformities - Leo has had 18 operations since birth. "I hate it when children are looking at me and pointing," Leo, 16, said. Over the next two years, world-leading cranio facial surgeon Professor David David will perform at least two more operations to level Leo's eyes and make him a new nose.



JOIN THE APEX FOUNDATION  
IN ASSISTING YOUNG  
AUSTRALIANS TOWARDS A  
BETTER QUALITY OF LIFE!

- BECOME A MEMBER
- BECOME A VOLUNTEER
- BECOME A DONOR

**Apex Foundation  
Memberships Rates 2011/12:**

**Individuals -  
\$82.50 per year  
\$165 for 2 years  
\$1,100 Gold Life**

**Clubs -  
\$165 per year  
\$1650 Gold Life**



Apex Australia  
AON Tower  
Level 5, 201 Kent Street  
Sydney NSW 2000

Ph: 02 9253 7775  
Fx: 02 9253 7117

Email:  
info@apexfoundation.org.au  
admin@apex.org.au

Web:  
www.apexfoundation.org.au  
www.apex.org.au

"APEX

*In Action"*

## MELANOMA TRUST

SEPTEMBER 2011

**Since 1990, the Melanoma Trust has donated in excess of \$900K for specific research projects and for public education on Melanoma and this cancer.**

**Following is an update by Libby Paton from ANZMTG, regarding this year's research...**

*"I wanted to write and thank you and the Apex Foundation for the generous donation which you gave to Melanoma Institute Australia (MIA) late last year. These funds were directed towards the Australia and New Zealand Melanoma Trials Group's Phase II Mel-D clinical trial. I am the project manager for this study and I wanted to take the opportunity to update you of recent developments.*

*The Mel-D clinical trial is investigating the safety and feasibility of high dose vitamin D supplementation in patients diagnosed with melanoma and at high risk of recurrence. The trial development phase has now been completed, the recruitment phase is progressing well and we have randomised the first 2 patients on to the protocol!*

*In December 2010, the study was opened at the MIA, which was followed by the opening of the trial at Royal Prince Alfred Hospital, in early March 2011.*

*The trial management committee and medical monitor continue to closely supervise and examine the trial's progress and the patients involved. We hope to enrol 75 patients to the study over the next 2 years.*

*If you have any questions please do not hesitate to contact me. Thanks again for your support which is greatly appreciated."*

Warm regards

Libby Paton  
Executive Officer  
ANZMTG Australia and New Zealand Melanoma Trials Group

